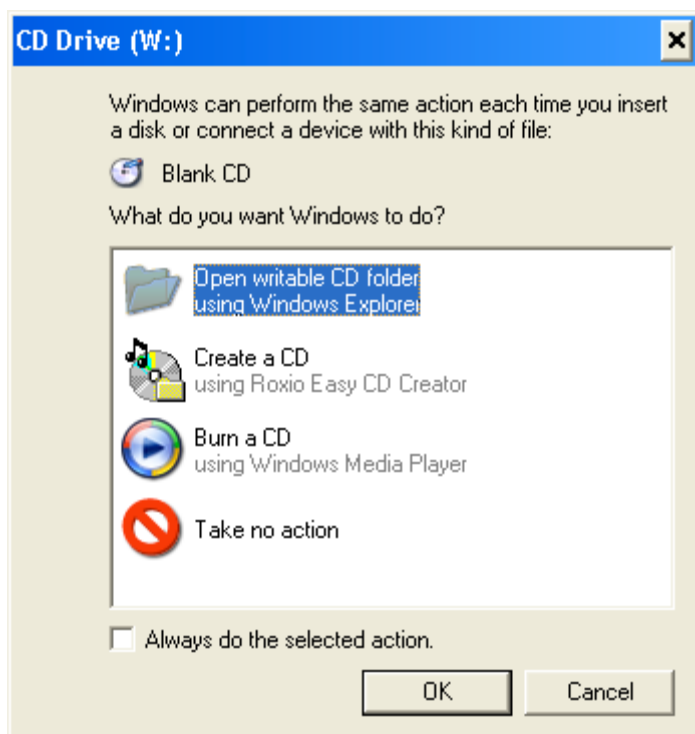
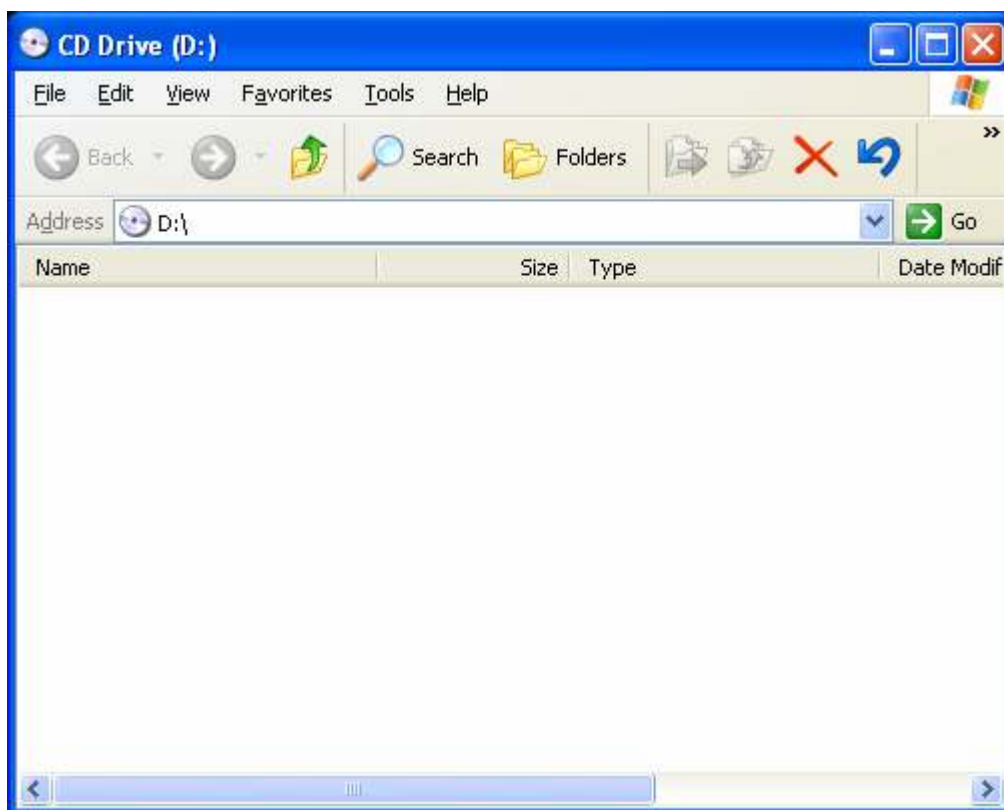


Burn a CD using Windows Explorer

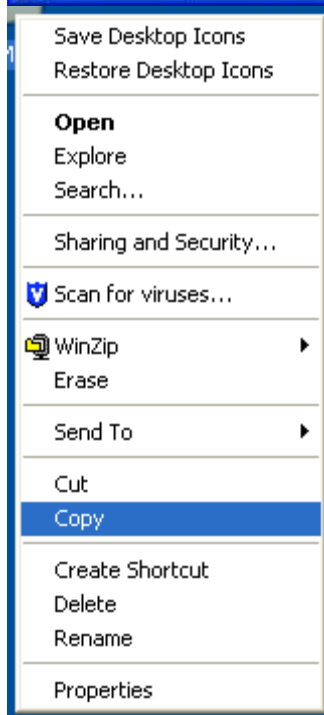
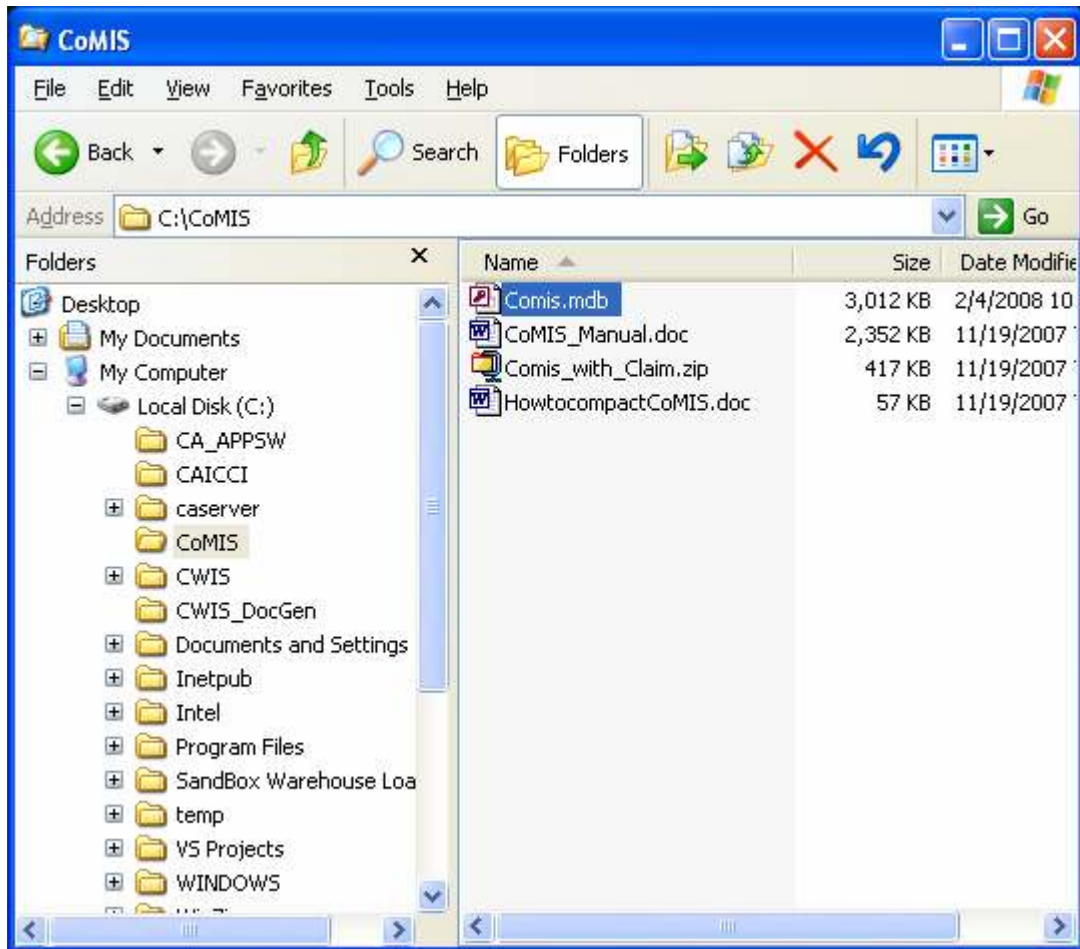
Insert a blank CD-R or CD-RW into a Read\Write CD drive and an option window will appear. Choose “Open writable CD folder using Windows Explorer”.



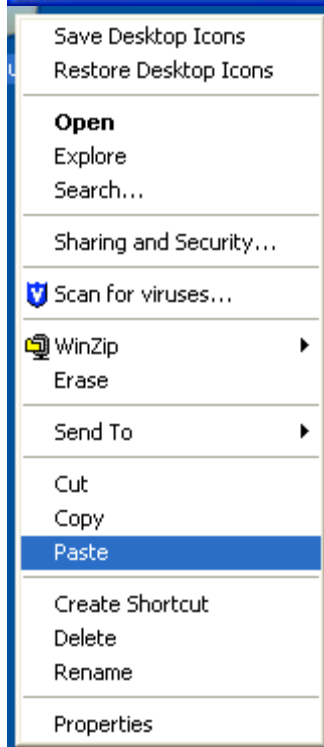
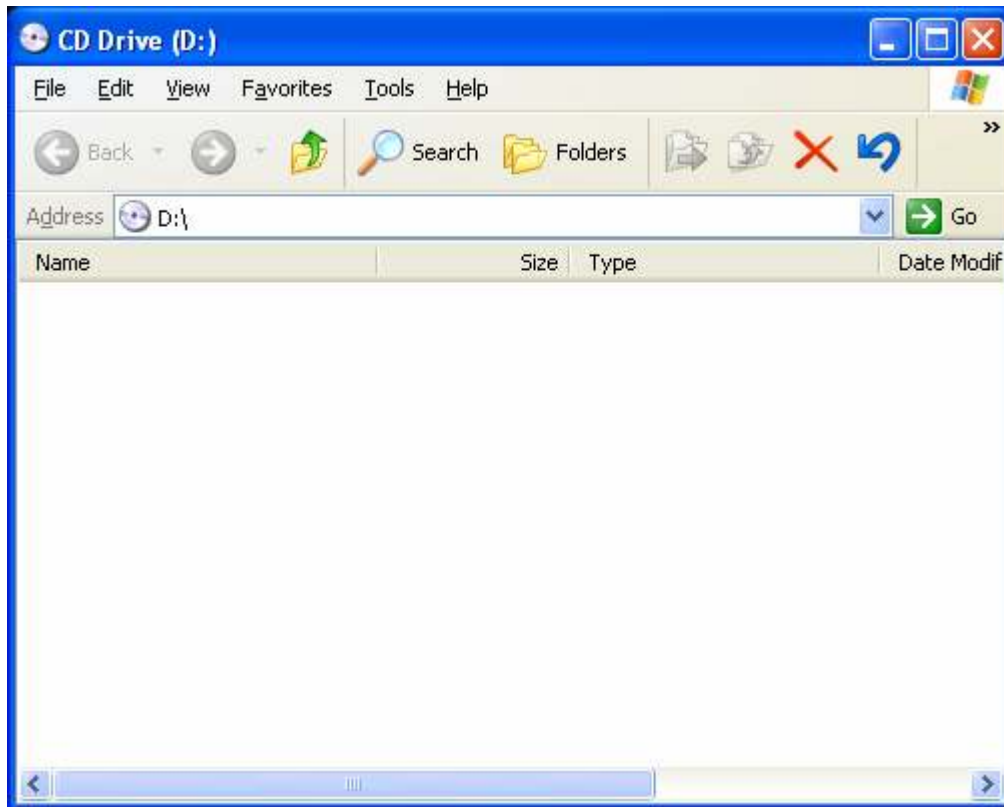
A window will open up with the drive letter of your CD ROM in the title and address bar.



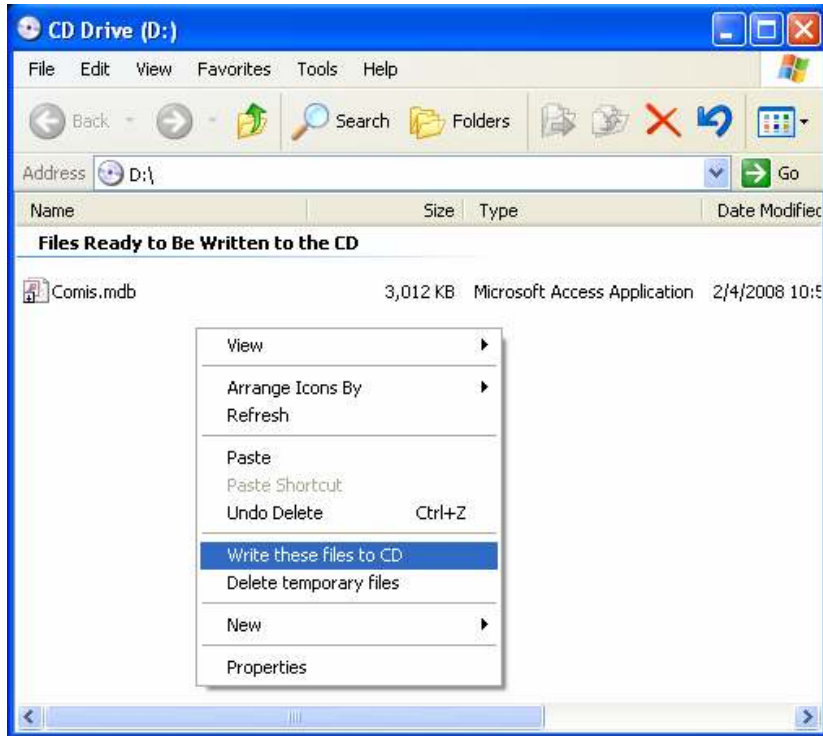
Next, open a new explorer window and navigate to the file(s) you want to write to CD. Right click the file(s) and choose “Copy”. (You will now have two explorer windows open.)



Next “Right Click” on the empty CD window and choose “Paste”. This will copy the file(s) to the CD drive as temporary unwritten files.



After you have copied the file(s) to the CD window “Right Click” in the empty space of the window and choose “Write these files to CD”.



A CD writing wizard will appear. Enter a CD or leave the default date. The name you choose will be the display name of the CD in windows explorer. Click next to start writing the file(s) to the CD.



When the wizard finishes it will prompt to write another CD with the same files or to quit the wizard.